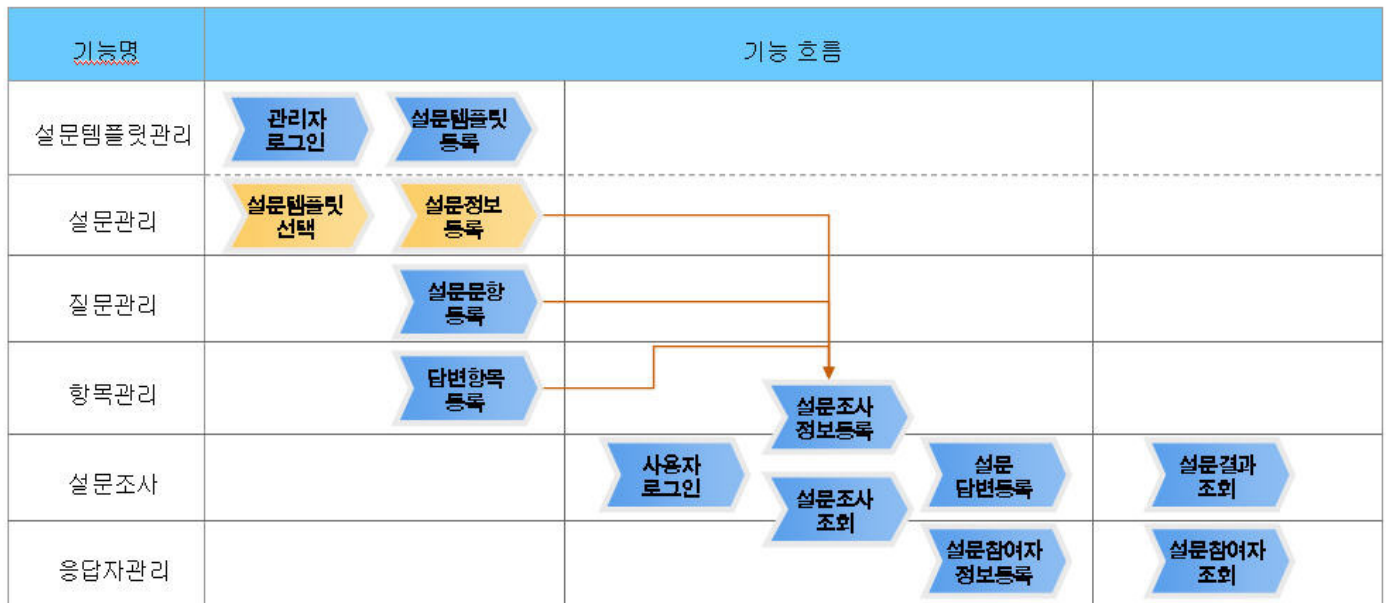


Questionnaire Management

Summary

This feature is for the management and inspection function used in establishing the questionnaire management system. The basic management and inspection process is as following.

- Feature Flow



1. Questionnaire Template Registration

Register after inserting questionnaire template basic information / decide questionnaire participation format

- [Questionnaire template management](#)

2. Questionnaire registration

Choose the questionnaire template, insert basic information and register.

- [Questionnaire management](#)

3. Questionnaire question registration

Choose the questionnaire information, insert basic information and register.

- [Questions management](#)

4. Questionnaire item registration

Choose questionnaire information and questionnaire item information, insert basic information and register.

- [Questions item management](#)

5. Questionnaire participation

Respond to questionnaire research in questionnaire participation registration. Use the questionnaire participation statistics to confirm the result.

- [Questionnaire participation](#)

6. Confirm questionnaire research (result)

Confirm the result of questionnaire participation.

- [Questionnaire research](#)

7. Confirm the result of questionnaire respondent management

Confirm the result from participated respondents of the questionnaire.

- [Questionnaire respondent management](#)

Description

Package dependency

The questionnaire management package has direct functional dependency to the common package (cmm) of element technology and authorization management package. However, to avoid error on deployment, the distribution file contains questionnaire management, questionnaire respondent management, questionnaire template management, questionnaire question management, questionnaire item management, and calendar package to dependencies between packages.

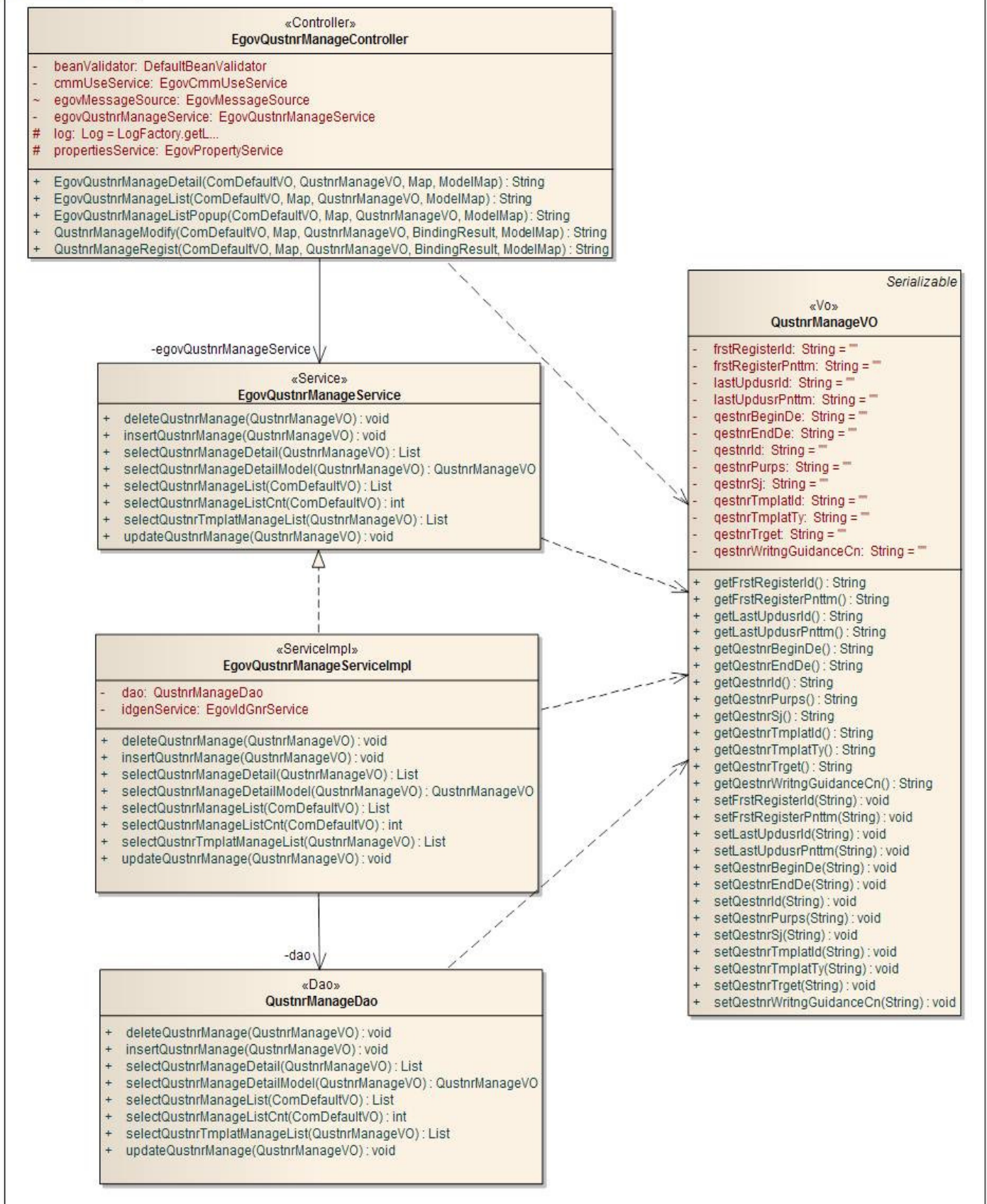
- Package Dependency: [User Support Package Dependency](#)

Related Source

Type	Source	Remarks
Controller	egovframework.com.uss.olp.qmc.web.EgovQustnrManageController.java	Controller class for questionnaire management
Service	egovframework.com.uss.olp.qmc.service.EgovQustnrManageService.java	Service interface for questionnaire management
ServiceImpl	egovframework.com.uss.olp.qmc.service.impl.EgovQustnrManageServiceImpl.java	ServiceImpl Class for questionnaire management
VO	egovframework.com.uss.olp.qmc.service.QustnrManageVO.java	VO Class
VO	egovframework.com.cmm.ComDefaultVO.java	Search VO Class
DAO	egovframework.com.uss.olp.qmc.service.impl.QustnrManageDao.java	Dao class questionnaire management
JSP	/WEB-INF/jsp/egovframework/com/uss/olp/qmc/EgovQustnrManageList.jsp	List inquiry page for questionnaire management
JSP	/WEB-INF/jsp/egovframework/com/uss/olp/qmc/EgovQustnrManageListPopup.jsp	List page for questionnaire management
JSP	/WEB-INF/jsp/egovframework/com/uss/olp/qmc/EgovQustnrManageRegist.jsp	Registration page for questionnaire management
JSP	/WEB-INF/jsp/egovframework/com/uss/olp/qmc/EgovQustnrManageModify.jsp	Revision page for questionnaire management
JSP	/WEB-INF/jsp/egovframework/com/uss/olp/qmc/EgovQustnrManageDetail.jsp	Detailed inquiry page for questionnaire management questionnaire management
QUERY XML	resources/egovframework/sqlmap/com/uss/olp/qmc/EgovQustnrManage_SQL_Mysql.xml	MySQL based QUERY XML for questionnaire management
QUERY XML	resources/egovframework/sqlmap/com/uss/olp/qmc/EgovQustnrManage_SQL_Oracle.xml	Oracle based QUERY XML for questionnaire management
QUERY	resources/egovframework/sqlmap/com/uss/olp/qmc/EgovQustnrManage_SQL_Tibero.xml	Tibero based

XML		QUERY XML for questionnaire management
QUERY XML	resources/egovframework/sqlmap/com/uss/olp/qmc/EgovQustnrManage_SQL_Altibase.xml	Altibase based QUERY XML for questionnaire management
Validator Rule XML	resources/egovframework/validator/validator-rules.xml	XML that defined the validator rule
Validator XML	resources/egovframework/validator/com/uss/olp/qmc/EgovQustnrManage.xml	Validator XML for questionnaire management
Message properties	resources/egovframework/message/com/message-common_ko_KR.properties	Message properties for questionnaire management
Idgen XML	resources/egovframework/spring/context-idgen.xml	Id Idgen XML for questionnaire management

Class Diagram



ID Generation

ID Generation related DDL and DML

- To utilize ID Generation Service, **QUSTNRTMPLA_ID** is added to the Sequence storage table, COMTECOPSEQ.

```

CREATE TABLE COMTECOPSEQ (
    table_name varchar(16) NOT NULL,
    next_id DECIMAL(30) NOT NULL,

```

PRIMARY KEY (table_name));

INSERT INTO COMTECOPSEQ VALUES('QUSTNRTMPLA_ID','0');

ID Generation Configuration (context-idgen.xml)

```
<bean name="egovQustnrManageIdGnrService"
      class="egovframework.rte.fdl.idgnr.impl.EgovTableIdGnrService"
      destroy-method="destroy">
  <property name="dataSource" ref="egov.dataSource" />
  <property name="strategy" ref="QustnrManageInfotrategy" />
  <property name="blockSize" value="10"/>
  <property name="table" value="COMTECOPSEQ"/>
  <property name="tableName" value="QUSTNRTMPLA_ID"/>
</bean>
<bean name="QustnrManageInfotrategy"
      class="egovframework.rte.fdl.idgnr.impl.strategy.EgovIdGnrStrategyImpl">
  <property name="prefix" value="QMANAGE_" />
  <property name="cipers" value="12" />
  <property name="fillChar" value="0" />
</bean>
```

Related Table

Table name	Table name(English)	Note
Questionnaire Management	COMTNQESTNRINFO	Manages questionnaire title authors.

Related Function

The questionnaire management function is composed of **questionnaire management list inquiry, detailed questionnaire management inquiry, questionnaire management register and questionnaire management update.**

Questionnaire management list inquiry

Business Rule

The manager can inquire information on the pre-registered questionnaire management as a list and move to registration screen by clicking the Register button.

Related Codes

N/A

Screen and execution manual

Action	URL	Controller method	QueryID
List Inquiry	/uss/olp/qmc/EgovQustnrManageList.do	egovQustnrManageList	"QustnrManage.selectQustnrManage", "QustnrManage.selectQustnrManageCnt"

Questionnaire management list is accessed 10 items per page, paging occurs per 10 pages. Search options are applied to question title and author.

To change search range per page, update pageUnit, pageSize in context-properties.xml file.(This setting will be applied to the whole common service)

순번	설문제목	설문기간	설문응답 자정보	설문문항	설문조사	통계	등록자	등록일자
1	친환경 설문지 관리	2009-04-01~2009-04-10	보기	보기	보기	보기	박상수	2009-04-23
2	대한민국 여성가수 인기...	2009-04-16~2009-04-30	보기	보기	보기	보기	박상수	2009-04-16
3	소녀시대와 원더걸스의 ...	2009-04-09~2009-04-09	보기	보기	보기	보기	업무담당자	2009-04-09
4	3.1절 특집 대한민국 애국...	2009-04-01~2009-04-24	보기	보기	보기	보기	조재영	2009-04-03
5	개인위생 관련 설문 조사	2010-01-04~2009-03-11	보기	보기	보기	보기	조재영	2009-04-02
6	화생방 훈련 설문조사	2009-04-06~2009-04-23	보기	보기	보기	보기	조재영	2009-04-02
7	봄맞이 설문조사	2008-01-01~2008-01-30	보기	보기	보기	보기	조재영	2009-03-30
8	웰빙관련 설문조사	2008-01-01~2008-01-30	보기	보기	보기	보기	조재영	2009-03-18
9	국민 기초질서 관련 설문...	2009-04-06~2009-04-18	보기	보기	보기	보기	조재영	

Search: select search options and enter search text to search specific items.

Register: register new questionnaire in **Questionnaire management registration** page.

Click the List (Questionnaire title): displays **Detailed inquiry of questionnaire management list** page.

Click the List (Questionnaire respondent info): displays **Questionnaire respondent info list** page.

Click the List (Questionnaire item): displays **Questionnaire question list** page.

Click the List (Questionnaire): displays **Questionnaire list** page.

Click the List (Statistics): displays **Questionnaire statistics** page.

Detailed inquiry of questionnaire management list

Business rule

This is the screen by clicking the List from the questionnaire management list which shows detailed information on the questionnaire management.

Related codes

N/A

Screen and execution manual

Action	URL	Controller method	QueryID
Detailed inquiry	/uss/olp/qmc/EgovQustnrManageDetail.do	egovQustnrManageDetail	"QustnrManage.selectQustnrManageDetailModel"
Delete respondent	/uss/olp/qmc/EgovQustnrManageDetail.do	egovQustnrManageDetail	"QustnrManage.deleteQustnrRespondManage"
Delete questionnaire	/uss/olp/qmc/EgovQustnrManageDetail.do	egovQustnrManageDetail	"QustnrManage.deleteQustnrRespondInfo"
Delete questionnaire item	/uss/olp/qmc/EgovQustnrManageDetail.do	egovQustnrManageDetail	"QustnrManage.deleteQustnrItemManage"
Delete questions	/uss/olp/qmc/EgovQustnrManageDetail.do	egovQustnrManageDetail	"QustnrManage.deleteQustnrQestnManage"
Delete questionnaire management	/uss/olp/qmc/EgovQustnrManageDetail.do	egovQustnrManageDetail	"QustnrManage.deleteQustnrManage"

설문관리 상세보기

설문제목 *	인플레이션 관력 국민 기초 수급 조사
설문목적 *	인플레이션 관력 국민 기초 수급 조사를 통해 국회 보고 자료를 만들어 물가 안정을 바로 잡도록 하는 취지에서 설문 목적의의를 둔다.
설문작성안내 내용 *	본설문 작성시 차근 차근 읽어 보시고, 질문에 대한 대답을 성심성의껏 작성해주세요.
설문대상 *	기타
설문기간 *	2009-05-01~2009-04-30
템플릿 유형 *	S 

[목록](#) [삭제](#) [수정](#)

Update: displays **Questionnaire management update** page.

Delete: alerts delete confirm message, and allows deletion of questionnaire.

List: displays **Questionnaire management list** page.

Questionnaire management registration

Business Rule

This stores the basic information of the questionnaire management. The red star (*) on the right shows the mandatory item.

Related Codes

N/A

Screen and execution manual

Action	URL	Controller method	QueryID
Register	/uss/olp/qmc/EgovQustnrManageRegist.do	qustnrManageRegist	"QustnrManage.insertQustnrManage"

설문관리 등록

설문제목 *	인플레이션 관력 국민 기초 수급 조사
설문목적 *	인플레이션 관력 국민 기초 수급 조사를 통해 국회 보고 자료를 만들어 물가 안정을 바로 잡도록 하는 취지에서 설문 목적의의를 둔다.
설문작성안내 내용 *	본설문 작성시 차근 차근 읽어 보시고, 질문에 대한 대답을 성심성의껏 작성해주세요.
설문대상 *	기타
설문기간 *	2009-05-01 ~ 2009-04-30
템플릿 유형 *	<input type="radio"/> A <input type="radio"/> B <input type="radio"/> C <input type="radio"/> D <input type="radio"/> E <input type="radio"/> G <input checked="" type="radio"/> S

[목록](#) [저장](#)

List: displays **Questionnaire management list** page.

Save: stores new questionnaire management item with input values.

Online manual management update

Business rule

This stores the basic information of the questionnaire management. The red star (*) on the right of the type shows the mandatory item.

Related Code

N/A

Screen and execution manual

Action	URL	Controller method	QueryID
Update	/uss/olp/qmc/EgovQustnrManageModify.do	qustnrManageModify	"QustnrManage.updateQustnrManage"

설문관리 수정

설문제목 *	인플레이션 관력 국민 기초 수급 조사					
설문목적 *	인플레이션 관력 국민 기초 수급 조사를 통해 국회 보고 자료를 만들어 물가 안정을 바로 잡도록 하는 취지에서 설문 목적의의를 둔다.					
설문작성안내 내용 *	본설문 작성시 차근 차근 읽어 보시고, 질문에 대한 대답을 성심성의 것 작성해주세요.					
설문대상 *	기타					
설문기간 *	2009-05-01 ~ 2009-04-30					
템플릿 유형 *	<input type="radio"/> A <input type="radio"/> B <input type="radio"/> C <input type="radio"/> D <input type="radio"/> E <input type="radio"/> G <input checked="" type="radio"/> S					

목록 저장

Update: updates current questionnaire with modified values.

List: displays **Questionnaire management list** page.